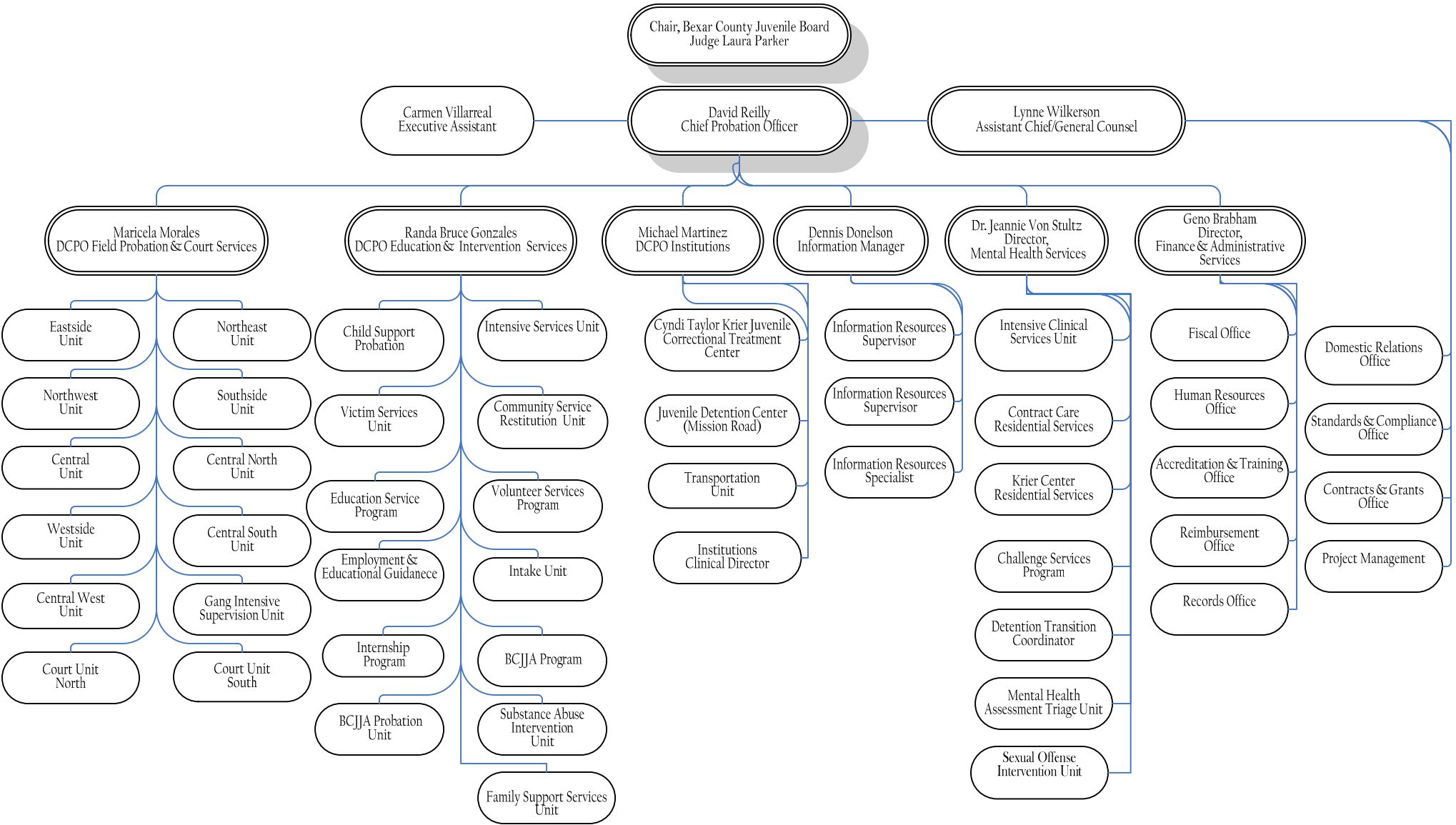


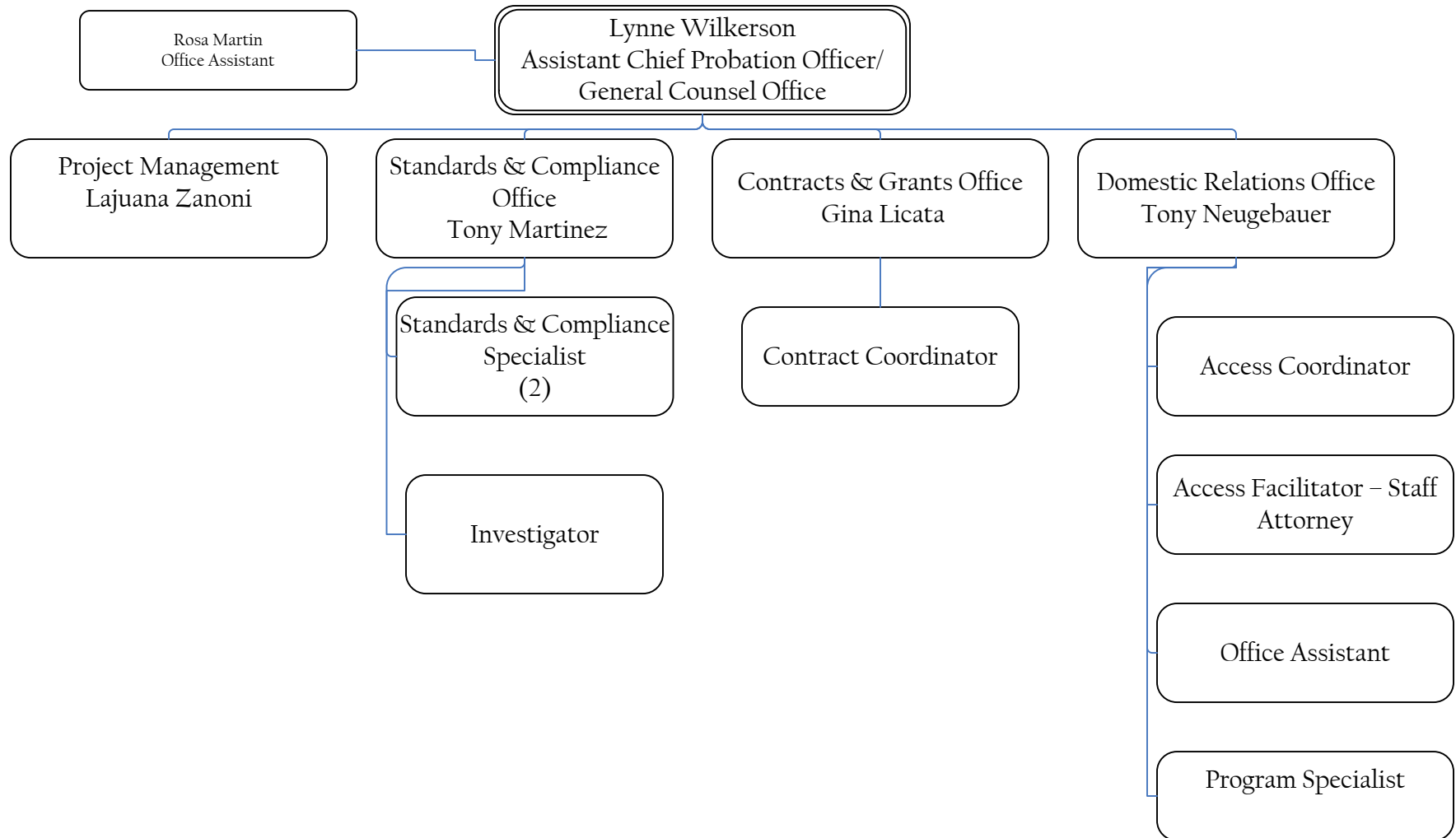
Bexar County Juvenile Probation Department



Total Number of Employees: 660
Total Number of Employees: 660

General Counsel Office

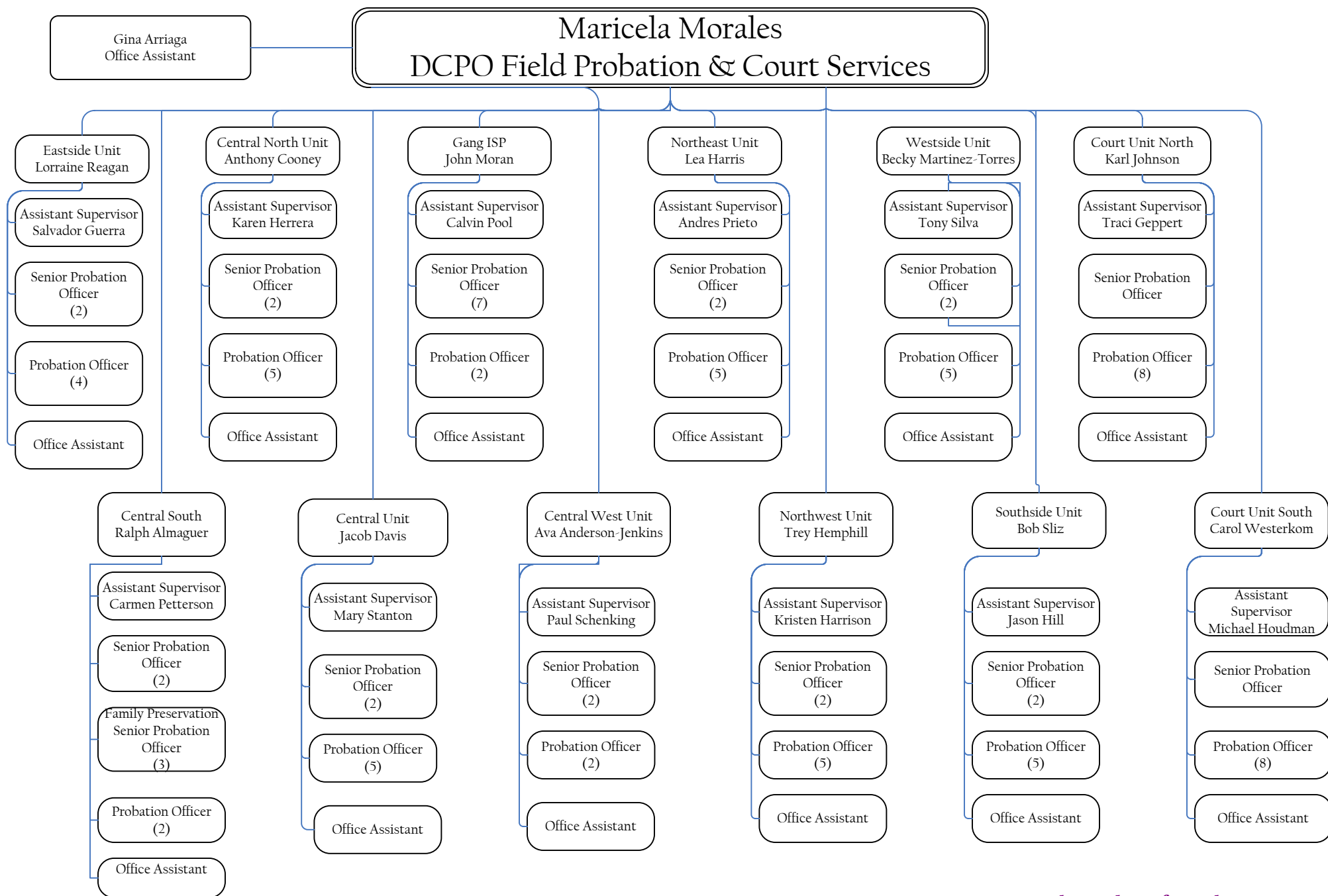
As of October 1, 2010
As of October 1, 2010



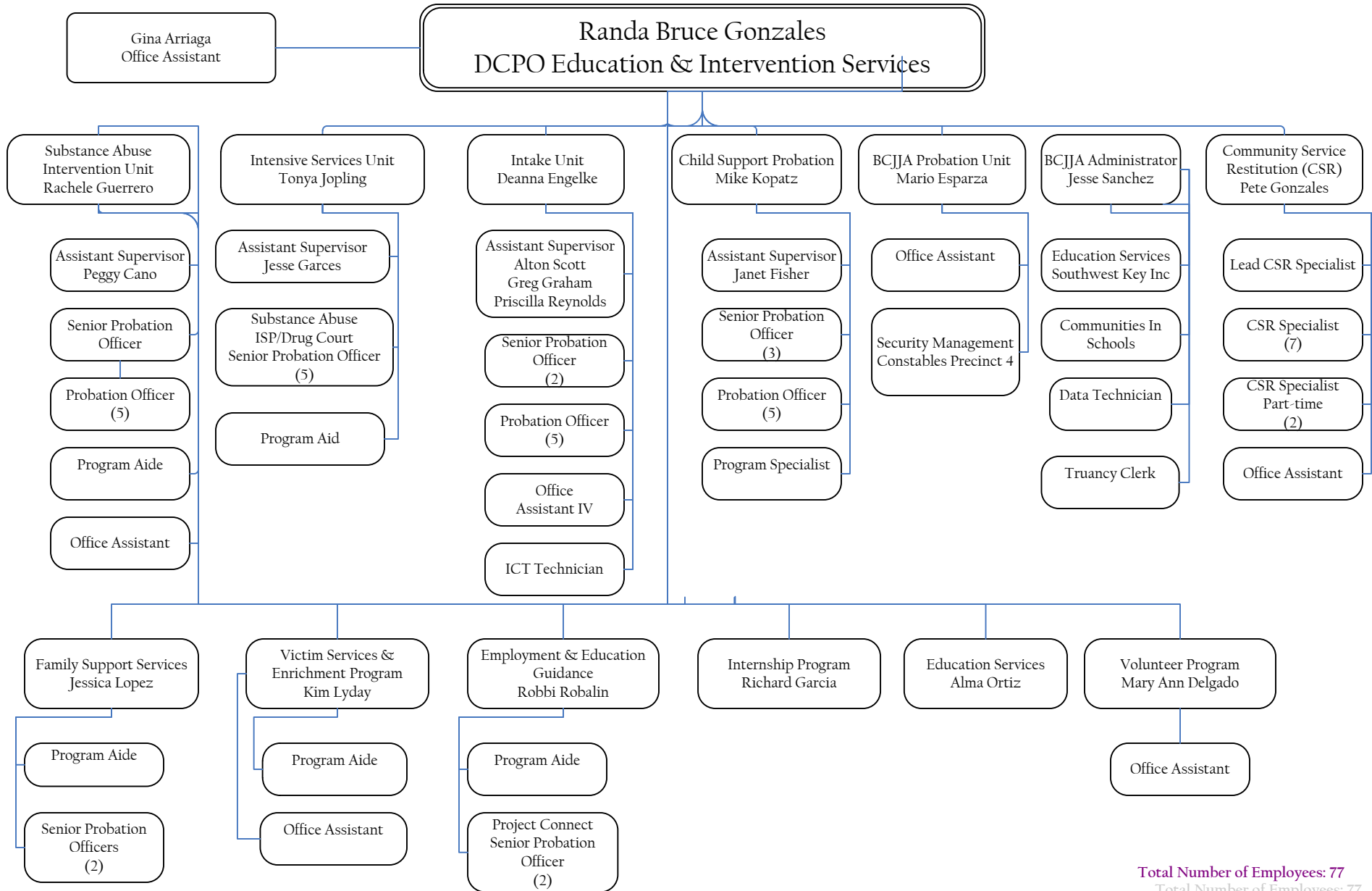
Total Number of Employees: 13
Total Number of Employees: 13

Field Probation & Court Services

As of October 1, 2010
As of October 1, 2010

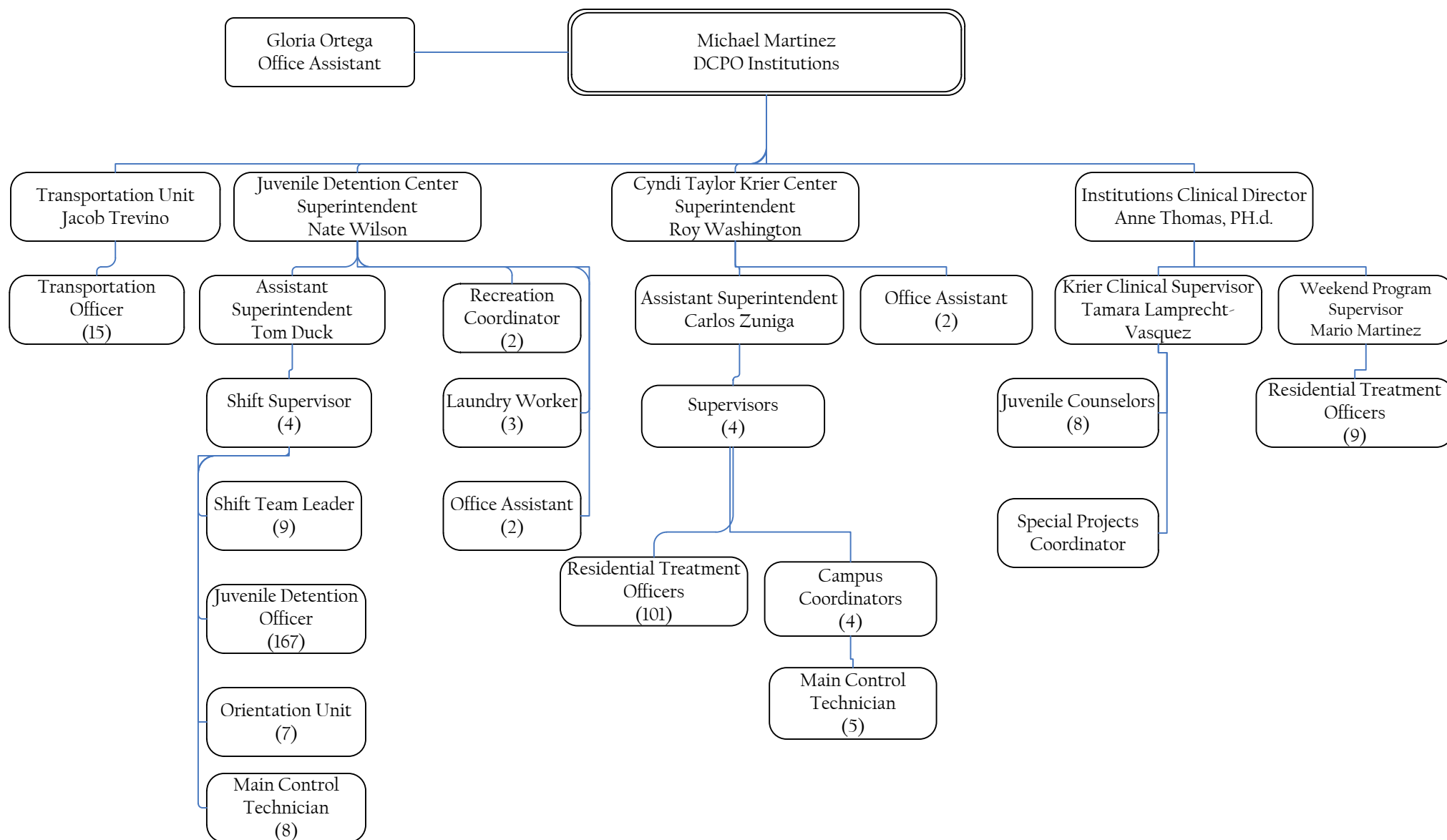


Education & Interventions Services



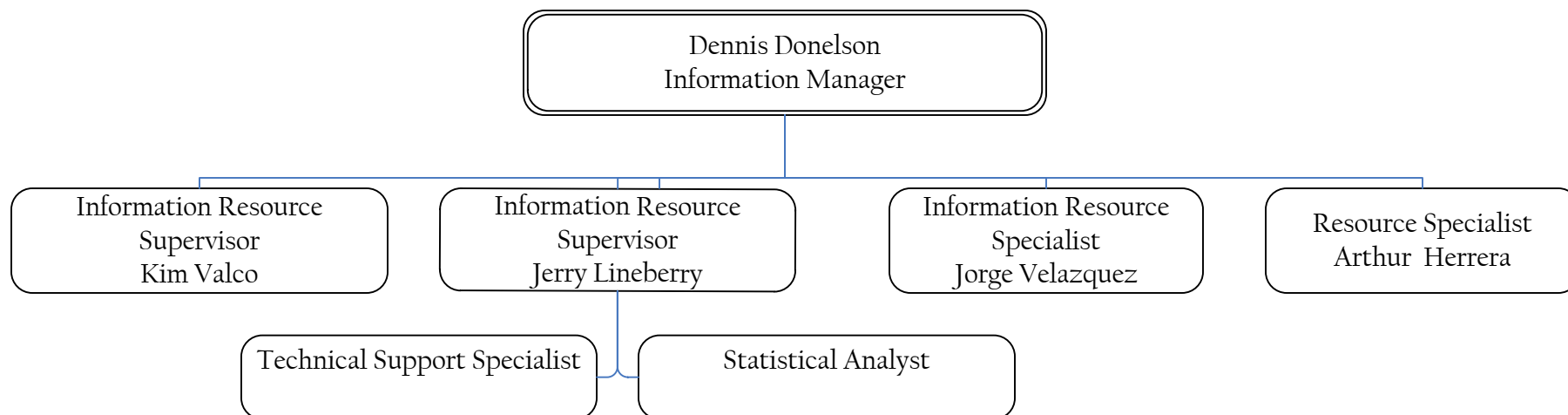
Total Number of Employees: 77
Total Number of Employees: 77

Institutions Division



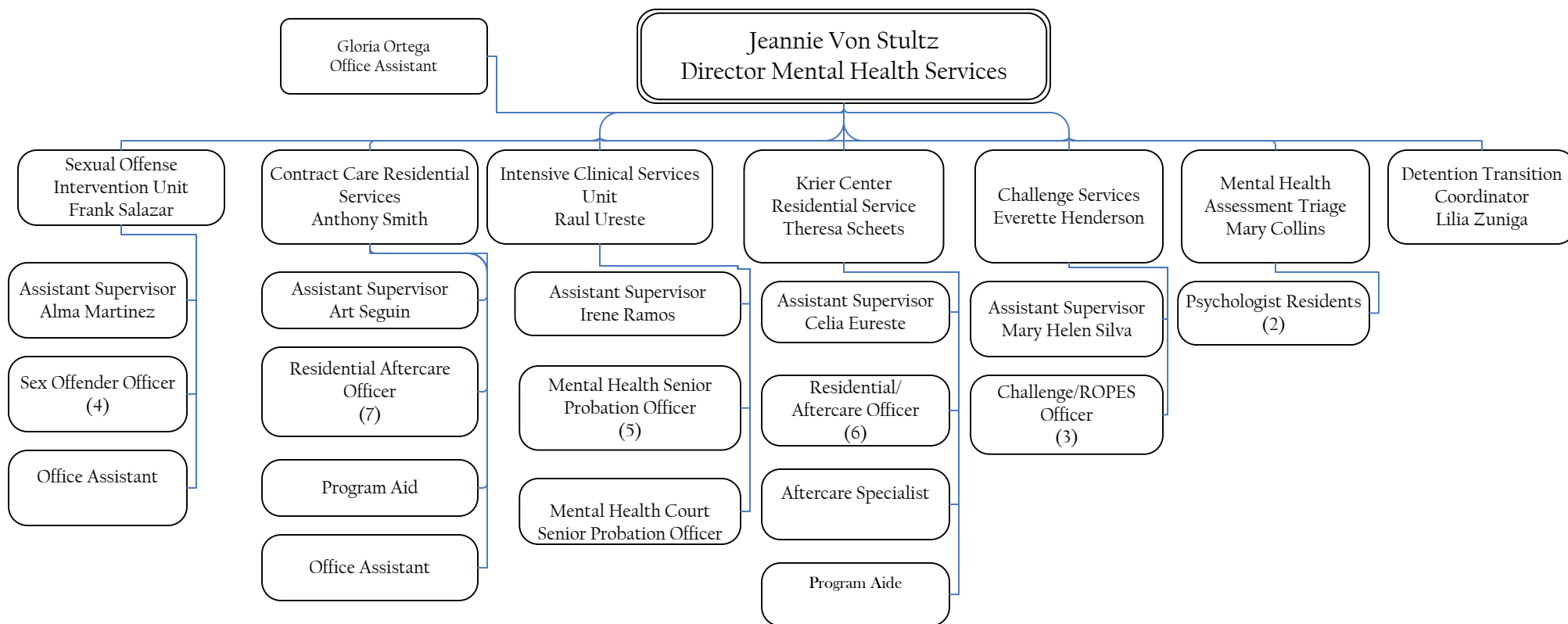
Total Number of Employees: 360
Total Number of Employees: 360

Information Management Unit



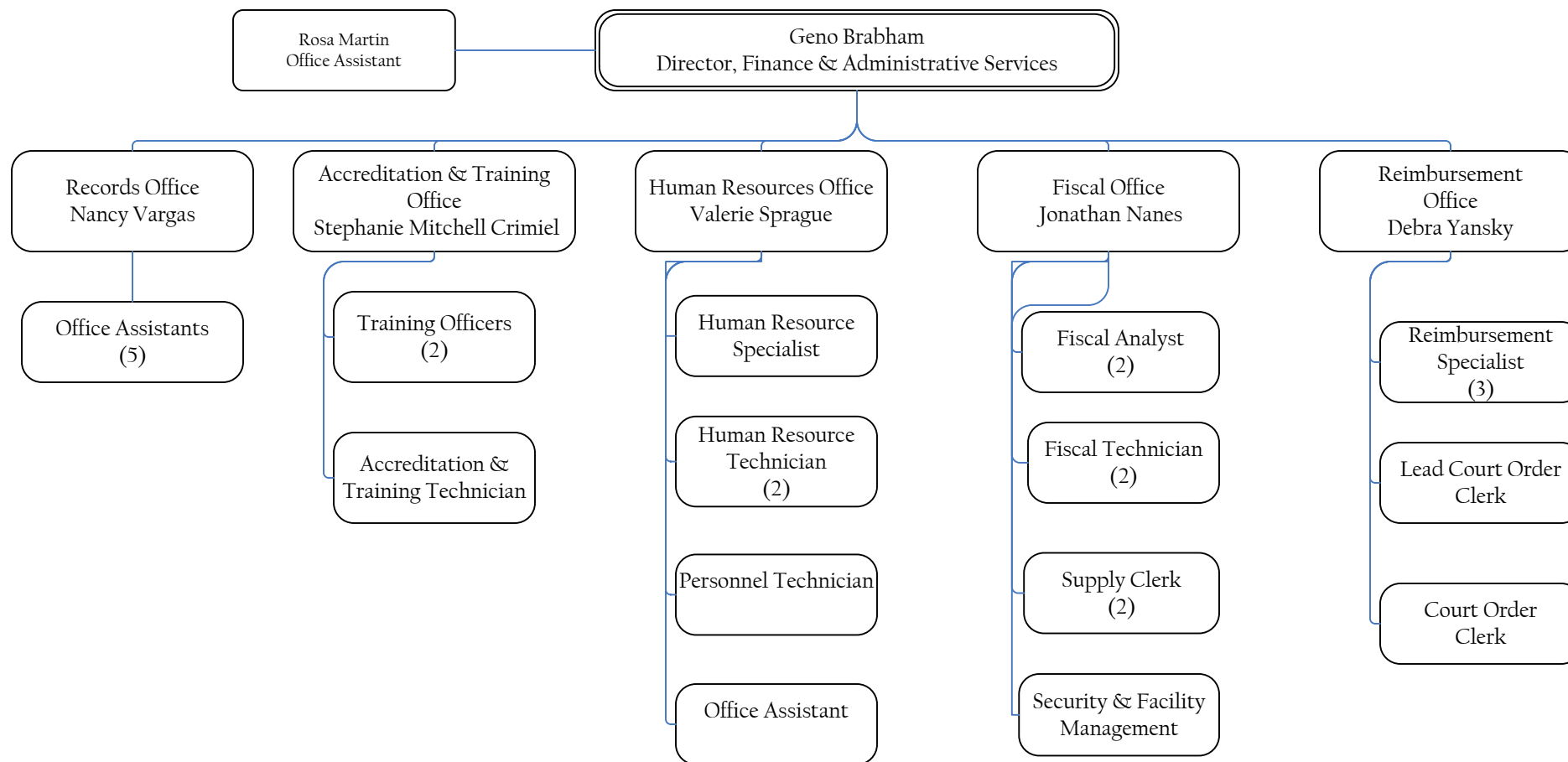
Total Number of Employees: 7
Total Number of Employees: 7

Mental Health Services Division



Total Number of Employees: 45
Total Number of Employees: 45

Administrative Services Division



Total Number of Employees: 31
Total Number of Employees: 31